

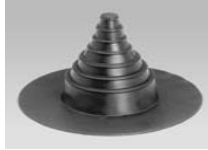


JM EPDM Peel & Stick Inside/Outside Corners

Size: 7" x 9"
 Packaging: 20 corners/box
 Coverage: 8.75 ft²/box
 Color: Black

70004212

Use universally for either an inside or outside corner. Quick and easy to install.



JM EPDM Peel & Stick Pipe Boots

Size: 1" to 6" diameter
 Packaging: 10 boots & clamps/box
 Color: Black

70000084

Specifically designed for round, roof penetrations eliminating need for field-fabrication. Large double-thick molded ribs, at the top of each step, offer superior tear resistance as well as a cutting guide.



JM EPDM Peel & Stick Pourable Sealer Pockets

Size: 6" diameter
 Packaging: 12 pockets/box
 Color: Black

70000093

To seal uneven penetrations that are difficult to flash.



JM EPDM Peel & Stick Walkpads

Size: 30" x 30"
 Packaging: 50 pads/pallet
 Coverage: 312.5 ft²/pallet
 Color: Black

70000104

Provide a safe, stable and maintenance-free walkway for quick and easy access to equipment in high traffic areas.



JM EPDM Peel & Stick T-Joint Patches

Size: 5.75" diameter
 Packaging: 100 patches/box
 Color: Black

70004211

To seal seam laps where perimeter and/or header sheets intersect (T-Joints) in EPDM systems.



JM EPDM Reinforced Termination Strip (RTS) With Tape

Size: 6" x 100'
 Packaging: 2 rolls/box
 Coverage: 50 ft²/roll
 Color: Black

70005569

To secure field membrane at base tie-ins and any angle change greater than 2 in/ft.



JM EPDM Pre-Taped Curb Flashing

Sizes Available:
70004383 18" x 50' with 3" tape
70004384 24" x 50' with 6" tape
 Packaging: 1 roll/box
 Color: Black

Produced with a 60 mil thick, EPDM with a release liner and a 3" or 6" factory laminated, self-adhering EPDM tape to efficiently flash curbs with a consistent, clean appearance.



JM EPDM Seam Tape Plus

Sizes Available:
70001631 3" x 100' Packaging: 4 rolls/box Coverage: 25 ft²/roll
70001632 6" x 100' Packaging: 2 rolls/box Coverage: 50 ft²/roll
 Color: Black

For field seaming JM EPDM membranes. Utilizes a clear polyethylene release liner for ease of installation.



JM EPDM Peel & Stick Sealing Strip

Sizes Available:
70004124 6" x 100' Packaging: 2 rolls/box Coverage: 50 ft²/roll
70004125 9" x 100' Packaging: 1 rolls/box Coverage: 75 ft²/roll
70004126 12" x 50' Packaging: 1 rolls/box Coverage: 50 ft²/roll
 Color: Black

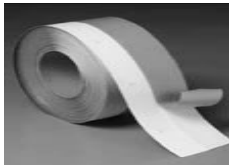
For stripping off laps as well as sealing gravel stop flanges to EPDM membrane.



JM EPDM Peel & Stick Flashing

Sizes Available:
70004127 6" x 100' Packaging: 2 rolls/box Coverage: 50 ft²/roll
70004128 9" x 50' Packaging: 1 rolls/box Coverage: 37.5 ft²/roll
70004129 12" x 50' Packaging: 1 rolls/box Coverage: 50 ft²/roll
 Color: Black

For flashing around corners and penetrations. Specifically designed for use in areas that cannot be properly detailed with field sheet / EPDM membrane.

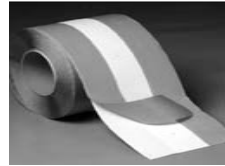


JM TPO 6" Reinforced Termination Strip (RTS)

Size: 6" x 100'
Packaging: 2 rolls/box
Coverage: 50 ft²/roll
Color: White

70000329

To secure the field membrane at any angle change greater than 2 in/ft (167 mm/m). Can be used in lieu of fastening through the field membrane with screws and plates at angle changes. Peel & Stick adhesive tape.

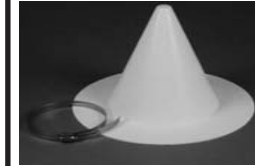


JM TPO 10" Reinforced Perimeter Strip (RPS)

Size: 10" x 100'
Packaging: 1 roll/box
Coverage: 83.3 ft²/roll
Color: White

70000598

In lieu of half sheets to secure the roof membrane attachment beneath TPO or EPDM membrane and as additional membrane securement as specified in Johns Manville specifications and details.



JM TPO Peel & Stick Pipe Boots

Size: 1" to 6" diameter
Packaging: 10 boots & clamps/box
Color: White

70001363

A smooth, cone-shaped boot, for traditional or split-pipe flashing applications to securely seal the penetration. Pipe boots eliminate the need for field fabrication.



JM TPO T-Joint Patch

Size: 4.5" diameter
Packaging: 100 patches/box
Color: **70001419** White
70004120 Grey
70004121 Tan

To seal seam laps where perimeter and/or header sheets intersect (T-joint) in TPO systems.



JM TPO Penetration Pocket

Size: 7.5" x 6" Oval
Packaging: 5 pockets/box
Color: White

70000673

Used to seal uneven penetrations through membrane that are difficult to flash. The penetration pan is comprised of two pieces that allow for positioning around objects to be flashed. A welding tab is included to seal the penetration pan once positioned.



JM TPO Pipe Boots

Size: 1" to 6" diameter
Packaging: 10 boots & clamps/box
Color: **70000541** White
70000302 Grey
70000301 Tan

A smooth, cone-shaped boot, for traditional or split-pipe flashing applications to securely seal the penetration. Pipe boots eliminate the need for field fabrication.



JM TPO Universal Corners

Size: 6" diameter, waffle pattern
Packaging: 20 corners/box
Color: **70001601** White
70001604 Grey
70001603 Tan

Designed in a waffle pattern for easy installation around any inside and outside corner.



JM TPO Cover Tape

Sizes Available:
6" x 100' Pack: 2 rolls/box Cvg: 50 ft²/roll
Color: **70000322** White
70000323 Grey
70000324 Tan
10" x 100' Pack: 1 roll/box Cvg: 83.3 ft²/roll
Color: **70000662** White only

To strip in metal flanges on JM TPO Membrane systems or as directed by JM technical services.



JM TPO Detail Membrane

Sizes Available:
24" x 50' Coverage: 100 ft²/roll
Color: **90001241** White
70001595 Grey
70001596 Tan
48" x 50' Coverage: 200 ft²/roll
Color: **70001693** White only

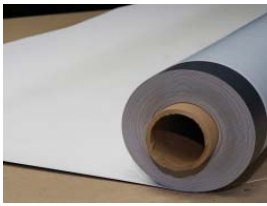
To easily form flashings around corners and penetrations. Specifically designed for use in areas that cannot be properly detailed with TPO field membrane.



JM TPO Reinforced Cover Strip

Size: 8" x 50'
Packaging: 1 roll/container
Coverage: 33.3 ft²/roll
Color: **70001881** White
70008479 Grey
70003041 Tan

Primarily used to "strip in" flashing details, gravel stops, TPO coated metal joints, and exposed fasteners in the roof field.

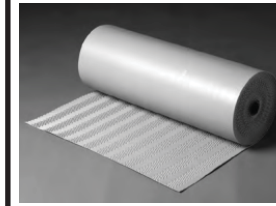


JM TPO SA Flashing Membrane

Size: 5' x 100'
Packaging: 7 rolls/pallet
Coverage: 500 ft²/roll
Color: White

90025229

Use on curbs and parapet walls.



JM TPO Walkpad

Size: 30" x 50'
Packaging: 1 roll/container
Coverage: 125 ft²/roll
Color: Grey

90017894

Provides a safe, stable and maintenance-free walkway for quick and easy access to rooftop equipment in high traffic areas.



JM LVOC Membrane Adhesive (TPO & EPDM)

Size: 5 gal pail
Coverage: 50 - 90 ft²/gal
Color: Yellow

70004668

For adhering JM TPO and JM EPDM membranes to approved substrates. Do not use on fleece-backed membranes at any time.



JM TPO Water Based Membrane Adhesive

Size: 5 gal pail
Coverage: 120 - 180 ft²/gal
Color: Bright blue when wet, and dark green when ready to adhere.

70004300

For adhering JM TPO membranes to approved substrates. One-sided horizontal application. Two-sided vertical application.



JM EPDM Water Based Membrane Adhesive

Size: 5 gal pail
Coverage: 120 - 180 ft²/gal
Color: White

70005182

For adhering JM EPDM membranes to approved substrates. One-sided horizontal application. Two-sided vertical application.



JM All Season Sprayable Bonding Adhesive

Vertical coverage: 750 ft²/cylinder
Horizontal coverage: 1000 ft²/cylinder
Color: Light Green

70006327

An aerosol bonding adhesive that can be used for TPO and EPDM adhered roofing systems and wall flashings. The JM All Season adhesive complies to Low VOC requirements and is a contact adhesive requiring two-sided application.



JM EPDM Tape Primer Plus (Low VOC)

Sizes Available:
70006264 1 gal can Pkg: 4 cans/box
70006263 3 gal pail Pkg: 1 pail

Coverage:
Reinforced: 375 ft²/gal
Non-reinforced: 500 ft²/gal

Color: Translucent Electric Blue

To prime JM EPDM membrane surfaces for JM EPDM Tape and Peel and Stick products.



JM Single Ply LVOC Caulk

Size: 10.3 oz tube
Packaging: 30 tubes/box
Coverage: 20 lin ft/tube
Color: **70005139** Black
70005140 White

To seal the edges around flashing terminations, peel and stick products and exposed edges of JM membrane cement splices.



JM TPO LVOC Edge Sealant

Size: 16 oz bottle
Packaging: 12 bottles/box
Coverage: 135 lin ft/bottle with 3/8" bead
Color:
70005398 Clear
70005399 White (available - not stocked)

To seal cut edges of JM TPO membrane.



JM Single Ply Sealing Mastic

Size: 11oz tube
Packaging: 12 tubes/box
Coverage: 15 lin ft/tube
Color: Grey

70004150

To seal JM Single Ply membrane to terminations and other penetrations.



JM One-Part Pourable Sealer

Size: .5 gal pouch
Packaging: 4 pouches/box
Coverage: 122 in²/pouch at 2" thick
Color: Grey

Used as a penetration pocket filler.



JM Single Ply Membrane Primer (Low VOC)

Sizes Available:
3 gal pail Packaging: 1 pail
Coverage: 200 ft²/gal
Color: Clear to Light Yellow

70000744

To prime JM EPDM and TPO membrane surfaces for EPDM and TPO peel and stick products.



JM Weathered Membrane Cleaner

Size: 5 gal pail
Coverage: Will vary depending on the amount of release agent, dirt and debris.
Color: Clear

70005183

To thoroughly clean the release agent and dirt from JM TPO and JM EPDM membranes prior to applying primers or splice adhesives.



JM TPO Pourable Sealer

Size: 2 kits (Part A & B) /box
(Part A: 1 gal can; Part B: 1 pint can)
Coverage: 1 ft²/gal at 2" thick
Color: Part A: White, Part B: Black

70000285

Used as a penetration pocket filler.



JM EPDM/PVC Pourable Sealer (not used for TPO)

Size: 3 kits (Part A & B) /box
(Part A: .75 gal can; Part B: .5 pint can)
Color: Part A: Black, Part B: Amber

70000071

Used as a penetration pocket filler.

JM Roofing System Urethane Adhesive - RSUA



Size: **70002638** Cartridges: - 4 per case with 5 mixing tips
70002641 5 gal box, Part 1 **70002642** 5 gal box, Part 2
 - 1 set with 5 mixing tips
70002643 15 gal box, Part 1 **70002644** 15 gal box, Part 2
 - 1 set with 5 mixing tips
70002645 50 gal drum, Part 1 **70002646** 50 gal drum, Part 2
 - 1 set with 5 mixing tips

Coverage - **Fleece Backed Membranes - Bead Spacing (Applied bead size 3/4" min.)**

12" o.c. Cartridge: 600 ft²/case ; 189 ft²/gal ; 0.4 gal/100 ft²
 5 gal box: 2,500 ft²/set ; 250 ft²/gal ; 0.4 gal/100 ft²
 15 gal drum: 7,500 ft²/set ; 250 ft²/gal ; 0.4 gal/100 ft²
 50 gal drum: 25,000 ft²/set ; 250 ft²/gal ; 0.4 gal/100 ft²

6" o.c. Cartridge: 300 ft²/case ; 94 ft²/gal ; 1.1 gal/100 ft²
 5 gal box: 1,250 ft²/set ; 125 ft²/gal ; 0.8 gal/100 ft²
 15 gal drum: 3,750 ft²/set ; 125 ft²/gal ; 0.8 gal/100 ft²
 50 gal drum: 12,500 ft²/set ; 125 ft²/gal ; 0.8 gal/100 ft²

4" o.c. Cartridge: 200 ft²/case ; 63 ft²/gal ; 1.59 gal/100 ft²
 5 gal box: 833 ft²/set ; 83 ft²/gal ; 1.2 gal/100 ft²
 15 gal drum: 2,500 ft²/set ; 83 ft²/gal ; 1.2 gal/100 ft²
 50 gal drum: 8,333 ft²/set ; 83 ft²/gal ; 1.2 gal/100 ft²

Coverage - **Board Stock - Bead Spacing (Applied bead size 1/2" - 3/4" min.)**

12" o.c. Cartridge: 600-800 ft²/case ; 189-252 ft²/gal ; 0.33-0.4 gal/100 ft²
 5 gal box: 2,500-3,000 ft²/set ; 250-300 ft²/gal ; 0.33-0.4 gal/100 ft²
 15 gal drum: 7,500-9,000 ft²/set ; 250-300 ft²/gal ; 0.33-0.4 gal/100 ft²
 50 gal drum: 25,000-30,000 ft²/set ; 250-300 ft²/gal ; 0.33-0.4 gal/100 ft²

6" o.c. Cartridge: 300-400 ft²/case ; 94-126 ft²/gal ; 0.8-1.1 gal/100 ft²
 5 gal box: 1,250-1,500 ft²/set ; 125-150 ft²/gal ; 0.66-0.8 gal/100 ft²
 15 gal drum: 3,750-4,500 ft²/set ; 125-150 ft²/gal ; 0.66-0.8 gal/100 ft²
 50 gal drum: 12,500-15,000 ft²/set ; 125-150 ft²/gal ; 0.66-0.8 gal/100 ft²

4" o.c. Cartridge: 200-266 ft²/case ; 63-84 ft²/gal ; 1.19-1.59 gal/100 ft²
 5 gal box: 833-1,000 ft²/set ; 83-100 ft²/gal ; 1.0-1.2 gal/100 ft²
 15 gal drum: 2,500-3,000 ft²/set ; 83-100 ft²/gal ; 1.0-1.2 gal/100 ft²
 50 gal drum: 8,333-10,000 ft²/set ; 83-100 ft²/gal ; 1.0-1.2 gal/100 ft²

Color: **Part 1 - Brown, Part 2 - Colorless, Combined/foamed adhesive - Light Amber**

A two-component polyurethane adhesive used for attaching fleece-backed single ply membranes to insulation boards or various deck types as well as insulation boards to the roof deck or to other insulation boards.

JM One-Step Foamable Adhesive



70002671

Size: Case - 4 cartridges/case with 6 mixing tips

Coverage - Bead Spacing:

12" o.c. 400-600 ft²/case; 253-379 ft²/gal 0.26-0.40 gal/100 ft²
6" o.c. 200-300 ft²/case; 126-190 ft²/gal; 0.52-0.80 gal/100 ft²
4" o.c. 133-200 ft²/case; 84-126 ft²/gal; 0.78-1.2 gal/100 ft²

Color: **Part 1 - Tan, Part 2 - Colorless**

A two-component polyurethane adhesive used for attaching insulation or cover boards to the roof deck or to other insulation boards..

JM Two-Part Urethane Insulation Adhesive (UIA)



Size:

70000022 Case: 4 - cartridges/case with 6 mixing tips
70000023 Box (Part 1) **70000024** Box (Part 2)
 2 - boxes (parts)/box ; 5 gal each

Coverage:

Case: 400-600 ft² per case
 Box: 1,000-2,000 ft² per set

For bonding insulation board products to approved roofing substrates, and insulation to insulation.

JM Two-Part Urethane Insulation Adhesive (UIA) Canister



Size: Canister

70005637 Part 1 **70005638** Part 2

Items/box: 25 ft hose, gun assembly, 6 mixing tips,
 3 - 17" Extension tubes

For Board Installation Only - Bead Spacing:

12" o.c. Coverage: 3,500 ft²
6" o.c. Coverage: 1,750 ft²
4" o.c. Coverage: 1,172 ft²

For Membrane Installation Only:

For bonding fleece-backed singly ply, insulation and cover boards.